



2017
CAMARO

CAMARO 2017

CHEVROLET 



FIND NEW ROADS™

17CHE-CAM-CAT01

CHEVROLET.COM

DEP
DEALER ePROCESS

CAMARO

FIFTY

1967-2017



Camaro 2SS Coupe in Nightfall Gray Metallic with available 50th Anniversary Edition and other available features.



IMPORTANT INFORMATION

CHEVROLET OWNER CENTER (MY.CHEVROLET.COM) Everything you need to know. Anything you need to do. Your Chevrolet Owner Center makes it easy. Create your account today to get the most out of your new vehicle. Get special alerts and offers, schedule service, review your maintenance schedule, and view how-to videos specifically for your vehicle. All online, anytime. Visit the Owner Center today to register or take a tour.

ENGINES Chevrolet products are equipped with engines produced by GM Powertrain or other suppliers to GM worldwide. The engines in Chevrolet products may also be used in other GM makes and models.

ASSEMBLY Chevrolet vehicles and their components are assembled or produced by different operating units of General Motors, its subsidiaries or suppliers to GM worldwide. We sometimes find it necessary to produce Chevrolet vehicles with different or differently sourced components than originally scheduled. Since some options may be unavailable when your vehicle is assembled, we suggest you verify that your vehicle includes the equipment you ordered and that, if there were changes, they are acceptable to you.

ONSTAR OnStar services require vehicle electrical system (including battery), wireless service and GPS satellite signals to be available and operating for features to function properly. OnStar acts as a link to existing emergency service providers. Subscription Service Agreement required. Call 1.888.4ONSTAR (1-888-466-7827) or visit onstar.com for OnStar Terms and Conditions, Privacy Policy, details and system limitations.

A NOTE ON CHILD SAFETY Always use safety belts and the correct child restraint for your child's age and size, even with air bags. Even in vehicles equipped with the Passenger Sensing System, children are safer when properly secured in a rear seat in the appropriate infant, child or booster seat. Never place a rear-facing infant restraint in the front seat of any vehicle equipped with an active frontal air bag. See the Owner's Manual and the child safety seat instructions for more safety information.

IMPORTANT WORDS ABOUT THIS CATALOG We have tried to make this catalog comprehensive and factual. We reserve the right, however, to make changes at any time, without notice, in prices, colors, materials, equipment, specifications, models and availability. Specifications, dimensions, measurements, ratings and other numbers in this catalog and other printed materials provided at the dealership or affixed to vehicles are approximations based on design and engineering drawings, prototypes and laboratory tests. Your vehicle may differ due to variations in manufacture and equipment. Since some information may have been updated since the time of printing, please check with your Chevrolet dealer for complete details. Chevrolet reserves the right to lengthen or

¹ Maintenance visits must occur within two years or 24,000 miles of vehicle delivery, whichever comes first. Does not include air filters. See participating dealer for other restrictions and complete details. ² Whichever comes first. See dealer for details. ³ Does not include emergency or security services. Visit onstar.com for coverage map, details and system limitations. ⁴ Requires data plan, compatible vehicle and compatible device. Some features require factory-installed remote start, power locks, Tire Pressure Monitoring System or active OnStar service. ⁵ Visit onstar.com for coverage map, details and system limitations. ⁶ Cargo and load capacity limited by weight and distribution.

shorten the model year for any product for any reason or to start and end model years at different times. Certain vehicle features may lose their usefulness over time due to obsolescence from technological changes. Unless otherwise noted, all claims based on GM Sports Car segment and latest available competitive information. Excludes other GM vehicles.

TIRES Camaro SS and ZL1 models come equipped with summer-only tires that tend to wear faster and are more susceptible to damage from road hazards or curb impact than standard profile tires. This type of damage is not covered by the GM New Vehicle Limited Warranty. See your dealer for proper tire selection.

SPARE TIRE INFORMATION There is no standard jack or spare tire in the 2017 Chevrolet Camaro. Some vehicles have a tire sealant and compressor kit that uses a liquid tire sealant to temporarily seal up to a one-quarter-inch puncture in the tread area of the tire. After using the tire inflator kit, it is recommended that you take the tire to an authorized retailer for inspection and repair as soon as possible, but at least within 100 miles of driving. The tire sealant cannot seal and inflate sidewall damage, punctures larger than one-quarter inch, or a tire that has unseated from the wheel. The sealant can only be used on one tire and for one time before its expiration date.

CHEVROLET OWNERSHIP EXPERIENCE Chevrolet is committed to enhancing the vehicle shopping and ownership experience through a wide array of programs. Visit chevrolet.com to build and price, find a vehicle, request a quote, compare vehicles, find financial tools or track your vehicle order. You'll also find information about 24-hour Roadside Assistance, Courtesy Transportation, Customer Assistance, GM Mobility, safety and current incentives.

CHEVROLET.COM/SAFETY Chevrolet is committed to keeping you and your family safe – from the start of your journey to your destination. That's why every Chevrolet is designed with a comprehensive list of safety and security features to help give you peace of mind.

GMMOBILITY.COM (1-800-323-9935) GM Mobility™ offers financial assistance for eligible adaptive equipment to make automotive travel easier for persons with disabilities or special transportation needs. To learn more about special GM Mobility offers, visit gmmobility.com.

THE BUYPOWER CARD The Chevrolet BuyPower Card – Every purchase you make with the BuyPower Card from Capital One* helps you earn toward an eligible new Chevrolet, Buick, GMC or Cadillac vehicle. There's no limit on the amount you can earn or redeem, and your Earnings don't expire. Visit chevroletbuypowercard.com/catalogs.

* Capital One, N.A. is the issuer of the BuyPower Card. General Motors ("GM") is responsible for the operation and administration of the Earnings program.



TWITTER.COM/CHEVROLET



YOUTUBE.COM/CHEVROLET



FACEBOOK.COM/CHEVROLET

GM, the GM logo, Chevrolet, the Chevrolet logo, and the slogans, emblems, vehicle model names, vehicle body designs and other marks appearing in this catalog are the trademarks and/or service marks of General Motors, its subsidiaries, affiliates or licensors. ©2016 OnStar. All rights reserved. Sirius, XM, SiriusXM and all related marks and logos are trademarks of Sirius XM Radio Inc. Apple is a registered trademark and Apple CarPlay is a trademark of Apple Inc. App Store is a service mark of Apple Inc. The Bluetooth word mark is a registered trademark owned by Bluetooth SIG, Inc., and any use of such mark by Chevrolet is under license. Bose is a registered trademark of the Bose Corp. Brembo is a registered trademark of Brembo S.p.A. Android Auto, Google and Google Play are trademarks of Google Inc.

©2016 General Motors. All rights reserved. Litho in USA. September 2016



Most things come and go and don't leave a mark. But some things leave such a mark that we measure our lives by them. Such is the Chevrolet Camaro, aka friend, pal.

Since 1967, Camaro has been more than a sports car – it's our sports car. Performance without pretense. Style that has endured. A car that has always put the driver first.

With its lower, leaner proportions and a stunning profile, the sixth-generation Camaro has a presence that can be seen in every sculpted body panel and felt in every turn.

“The 50th anniversary of Camaro is so important because we all grew up with this car,” says chief engineer Al Oppenheiser. “I’ve always said you don’t have to go very far to find someone who owned a Camaro, whether it was you, your brother, your sister, your dad or that best friend you’ll never forget.”



FIND NEW ROADS™



Camaro 2SS Convertible interior with available 50th Anniversary Edition, which includes Jet Black leather-appointed seats with Dark Gray sueded inserts and Orange accent stitching. Other available features also shown.





1. 50TH ANNIVERSARY EDITION.

A once-in-a-lifetime Camaro, available in both Coupe and Convertible on 2LT and 2SS. Unique 50th Anniversary treatments are included on the instrument panel, seatbacks and steering wheel.

2. A TRUE ORIGINAL. The 20-inch 50th Anniversary aluminum wheels feature a machined-face finish and exclusive center caps. The 50th Anniversary exterior decor also includes special badging, a satin chrome-accented grille, a body-color front splitter and Orange brake calipers (front brake calipers only on LT).

3. CUSTOM DETAILS. The 50th Anniversary Camaro welcomes you in with illuminated doorsill plates.

4. DESIGNER ACCENTS. A specially designed interior includes Jet Black leather-appointed seats with sueded inserts and Orange accent stitching. The exclusive "FIFTY" logo is debossed on the head restraints.



CAMARO LT



Camaro LT Coupe in Hyper Blue Metallic (extra-cost color) with the available RS Package and other available features.





TOM PETERS
DESIGN DIRECTOR, CAMARO

Creating a timeless Camaro is all about shape and form. The digital sculpture, and especially the hands-on clay work, makes this car sheer rolling art.

For me, Gen Six is all about responding to what we learned from Gen Five on the street. We set out to create a sculptural form that reflected the mass reduction, aerodynamics influence and just pure beauty.

From the long, narrow grille with its “in the hunt” look – we own that – to the strong and powerful profile and shorter rear overhang, this is a design with tension because there are a lot more crisp lines running through it.





Camaro LT Convertible in Silver Ice Metallic with available features and 20-inch 5-Split-Spoke Polished Forged-Aluminum Wheels from Chevrolet Accessories.





PHYSICAL PERFECTION. This is Camaro – the pure driver’s car – in possibly its most exhilarating form. The Camaro Convertible features modular underbody bracing to allow the same precise, nimble handling as the Coupe.

SKY-HIGH TECH. The top-up silhouette respects the iconic fastback image of the Coupe. But when it’s time to play, the fully electronic top lowers with the touch of the key fob or the single push of a button – even when driving up to 30 mph.

SHOW CAR SMOOTH. The retracted top fluidly disappears under the fully automatic hard tonneau cover, maintaining the crisp body lines.





2.0L TURBO. 275 HP. 0 to 60 in 5.4 seconds! Offering an EPA-estimated 31 MPG on the highway² With 275 horsepower and 295 lb.-ft. of torque, this is huge performance from an efficient turbocharged engine.

3.6L V6. 335 HP. 0 to 60 in 5.1 seconds^{1,2} This available engine balances power with fuel-saving³ technologies such as Variable Valve Timing, Active Fuel Management™ (with available 8-speed automatic transmission) and Direct Injection to offer 335 horsepower, 284 lb.-ft. of torque and an EPA-estimated 28 MPG highway with the available 8-speed automatic.



¹ Based on initial vehicle movement. ² With available 8-speed automatic transmission. ³ EPA-estimated MPG city/highway: Camaro LT with 3.6L V6 engine and 8-speed automatic transmission 19/28; Camaro LT with 3.6L V6 and 6-speed manual transmission 16/28.

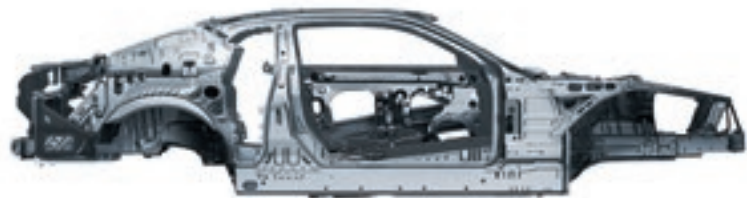
DEP
DEALER ePROCESS

“The Chevrolet Camaro is a better, more entertaining car to drive than a BMW 3 Series.”

– Motor Trend



Camaro 2LT interior in Jet Black with available Ceramic White Interior Accent Trim Package and other available features.



MODERN ARCHITECTURE. The new lightweight structure helped Camaro lighten the load by up to 390 lbs. vs. the fifth gen. The 4-wheel independent suspension, designed using aluminum components, was engineered to be 23% leaner. The result: a smooth ride with an incredible connection to the road.

CAN YOU HANDLE IT? Electric Power Steering brings road feel and response to a higher plane. Selectable driver modes offer distinct experiences. And the smaller, tighter proportions and quick steering ratios contribute to a nimble, controlled feeling with every turn of the wheel.

DEP
DEALER ePROCESS

CAMARO SS

**WITH 455 HP, CAMARO SS IS THE
HEART AND SOUL OF CHEVROLET PERFORMANCE.**





455-HP 6.2L LT1 V8. “Chevrolet hit this one out of the park,” says *Motor Trend*. Simply put, the small block V8 masterpiece, delivering 455 lb.-ft. of torque, brings to life the most powerful Camaro SS ever.



Camaro SS Coupe in Black
with available features.



Camaro 2SS Convertible in Garnet Red Tintcoat
(extra-cost color) with available features.





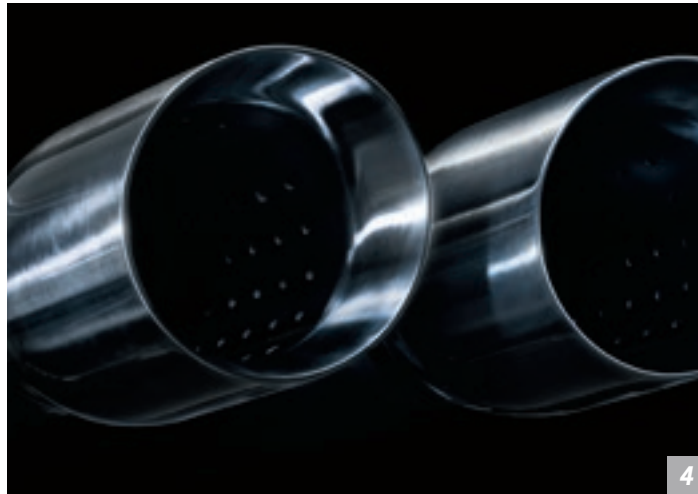
1



2



3



4

1. 6-SPEED MANUAL TRANSMISSION.

The leather-wrapped shifter includes a unique cap for the SS and a grip that's ideal for every driver. Active Rev Matching¹ anticipates downshifts with throttle blips for smooth, precise shifting.

2. BREMBO® BRAKES. This high-performance 4-piston all-disc system is capable of taking Camaro SS Coupe from 60 mph to a complete stop in 117 feet.

3. MAGNETIC RIDE CONTROL.

The precision handling credentials of Camaro SS are further enhanced by available Magnetic Ride Control™ that stiffens the suspension for high-performance driving while helping to maintain a smooth ride.

4. DUAL-MODE EXHAUST. This available performance exhaust system lets you refine the roar of the 6.2L LT1 V8 engine within each of its four driving modes – Tour, Sport, Track and Snow/Ice.

¹ Requires V8 engine and 6-speed manual transmission.



WANT MORE INFO?
GO TO CHEVY.COM/CAMARO

CAMARO 1LE

STREET-LEGAL TRACK STAR.

Camaro 2LT Coupe in Krypton Green (late availability, extra-cost color) with available V6 1LE Performance Package and dealer-installed Chevrolet Accessories.

FIRST-EVER V6 1LE. Offering track-capable performance, the V6 1LE is also a precisely balanced daily driver. Featuring aggressive suspension tuning and a dual-mode exhaust, the 335-hp V6 1LE delivers an estimated 0.97 g in cornering grip for consistent lap-after-lap performance on the track.

BRING IT. FE3 suspension components (from Camaro SS) include dampers, rear cradle mounts, ball-jointed rear toe links and stabilizer bars. Lightweight 20-inch forged-aluminum wheels with run-flat summer-only tires¹ pair with Brembo® 4-piston front brake calipers, a limited-slip differential and a standard track cooling package.

SERIOUS STYLE. The aggressive appearance of Camaro 1LE is enhanced by a unique Satin Black hood, front splitter and 3-piece rear spoiler.



SS 1LE. OWN THE TRACK. Here's what happens when you wrap a track-tuned chassis and suspension around a 455-hp 6.2L V8. The new FE4 performance-oriented chassis system features specific tuning for the magnetic dampers, springs and stabilizer bars. The package includes a new segment-exclusive Electronic Limited-Slip Differential, a dual-mode exhaust and Brembo 6-piston front brake calipers. Paired with exclusive Goodyear Eagle® F1 SuperCar® summer-only tires¹, lateral acceleration exceeds 1 g.



Camaro SS Coupe in Black with available SS 1LE Performance Package and Chevrolet Accessories.

¹ Do not use summer-only tires in winter conditions, as it would adversely affect vehicle safety, performance and durability. Use only GM-approved tire and wheel combinations. Unapproved combinations may change the vehicle's performance characteristics. For important tire and wheel information, go to my.chevrolet.com/learn/tires or see your dealer.



CAMARO ZL1



AL OPPENHEISER CHIEF ENGINEER, CAMARO

ZL1 is simply one of the most phenomenal executions of design, performance, aerodynamics and technology I've ever experienced from behind the wheel. We've elevated the game.

The ZL1 with the new available 10-speed automatic really hits the sweet spot for me. It is the convergence of all the pride, the passion, the performance and the technology we put in Camaro. The Electronic Limited-Slip Differential, combined with Performance Traction Management, takes control and balance to an astounding level.

I'll just say this: If you're looking for a track-capable car straight from the showroom, take a close look at the ZL1.





At left: Camaro ZL1 Coupe in Red Hot with available features. Available late 2016.
At right: Camaro ZL1 Convertible in Arctic Blue Metallic with available features. Available early 2017.

1. SUPERCHARGED V8. With a 650-hp supercharged V8, ZL1 is the most powerful Camaro ever. And you can choose between a standard 6-speed manual transmission with Active Rev Matching or an available 10-speed paddle-shift automatic that helps maintain optimum rpm levels for maximum responsiveness and quicker lap times.

2. RACE-PROVEN AERO. The specially sculpted front fascia enhances airflow and works together with the carbon-fiber composite hood extractor to pull heat from the engine compartment and reduce lift. Large outboard cooling ducts push air to the brakes, while air splitters and a rear spoiler create downforce at higher speeds.

3. GRIPPING PERFORMANCE. Standard 20-inch forged-aluminum wheels are wrapped in sticky Goodyear Eagle F1 SuperCar G:2 summer-only tires! Large Brembo® 6-piston front and 4-piston rear brake calipers give ZL1 impressive stopping power.

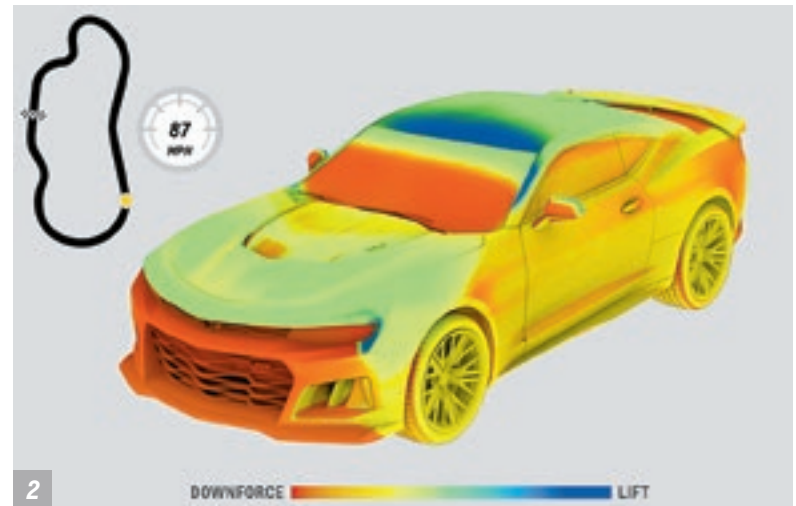
4. RECORD YOUR RIDES. The Performance Data Recorder (available on ZL1 Coupe and models with the available V6 1LE and SS 1LE Performance Packages) logs videos of your drives, along with real-time performance data, onto an SD memory card so you can analyze your technique and improve your driving abilities.



1



3



2



4

1 Do not use summer-only tires in winter conditions, as it would adversely affect vehicle safety, performance and durability. Use only GM-approved tire and wheel combinations. Unapproved combinations may change the vehicle's performance characteristics. For important tire and wheel information, go to my.chevrolet.com/learn/tires or see your dealer.
2 Based on initial vehicle movement.



650

HORSEPOWER

SKID PAD
1.02 G

MAXIMUM LATERAL
ACCELERATION (COUPE)

3.5 SECONDS

0 TO 60 MPH (AUTOMATIC COUPE)



Camaro ZL1 Coupe in Red Hot
with available features.

INTERIOR DESIGN

WHAT IS A DRIVER'S CAR? It's one where a flat-bottom steering wheel, a perfectly placed gear shifter and aggressively bolstered seats come together for the purpose of driving dynamics.

It's one where premium materials surround you, including available heated and ventilated seats with leather-trimmed surfaces. And one where rotating dials replace extra dash buttons for quicker, intuitive climate control.





Camaro ZL1 Convertible interior in Jet Black with leather-appointed seats with sueded microfiber inserts and other available features.



IT'S SHOWTIME. Interior spectrum lighting, standard on 2SS and ZL1 and available on 2LT, courses around the radio, door trim and cup holders, transitioning between 24 selectable colors. The color spectrum reacts to changes in drive modes, the lighting gives off an ambient nighttime glow, and there's even a pulsing light show mode you can select when parked.





1. GO CONFIGURE. An available 8-inch diagonal reconfigurable gauge cluster allows you to personalize the information you need and desire.

2. TRACK YOUR G FORCE. The Head-Up Display, standard on 2SS and ZL1 and available on 2LT, projects onto the windshield color digital readouts for vehicle speed, selected gear, g force, tachometer, compass, outside temperature, turn-by-turn navigation¹ information and more.



3. GET CONNECTED. The Chevrolet MyLink² Radio with an available customizable 8-inch diagonal color touch-screen includes Bluetooth[®] audio streaming³ for select phones, plus support for Apple CarPlay^{™4} and Android Auto^{™4} for compatible phones.

4. HUG A ROAD. The advanced Driver Mode Selector tailors up to eight vehicle attributes using four selectable modes: Tour, Sport, Snow/Ice (excludes V6 1LE) and Track (Track mode is exclusive to Camaro SS and ZL1 and models with the available V6 1LE Performance Package).

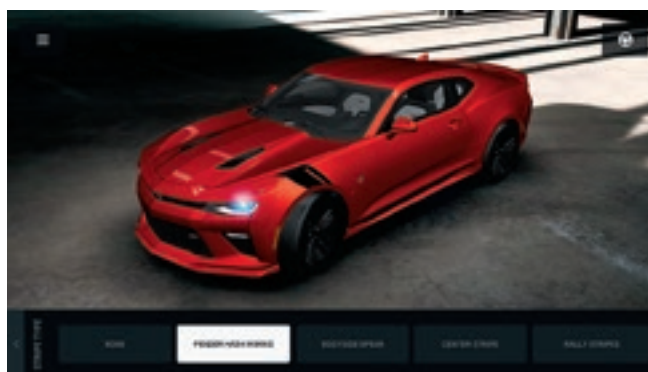
¹ Map coverage available in the United States, Puerto Rico and Canada. ² MyLink functionality varies by model. Full functionality requires compatible Bluetooth and smartphone, and USB connectivity for some devices. MyLink on Camaro does not include CD player. ³ Go to my.chevrolet.com/learn to find out which phones are compatible with the vehicle. ⁴ Vehicle user interfaces are products of Apple and Google and their terms and privacy statements apply. Requires compatible smartphone and data plan rates apply.

Apple CarPlay is a trademark of Apple Inc. iPhone is a trademark of Apple Inc., registered in the U.S. and other countries. Android Auto is a trademark of Google Inc.



CAMARO SIX APP





BRING CAMARO SIX TO LIFE. Our app invites you to download and experience the 2017 Camaro right on your smartphone or tablet. You can also explore trim levels, colors and wheels, and take a 360-degree spin around the interior.

SHARE YOUR EXPERIENCE. Now that you've built a legend, check out the specs of your freshly built Camaro. Then save your design for later or share it online with your friends.

VISUALIZE IT. At thecamarosix.com, you can even check out accessories to personalize your ride. Then prepare to encounter the Camaro you brought to life.

DOWNLOAD THE CAMARO SIX APP



IT'S GOT THE LOOK.



CUSTOMIZING CAMARO. The possibilities are almost limitless. For 2017, Chevrolet offers a complete range of accessories and custom features designed to give your Camaro just the look you've been searching for.

COLOR ACCENTS. You can select from a variety of exterior accent colors to give the sixth-generation Camaro even more of a performance edge. Custom grilles, an aero-shaped front splitter and a high-wing rear spoiler are among the accessories you can add.



WHEELS



Silver-Painted Aluminum
18" x 8.5" Front and Rear on LS or LT



5-Spoke Bright Silver-Painted Aluminum
paired with summer-only tires¹
20" x 8.5" front and 20" x 9.5" rear on SS



5-Split-Spoke Bright Silver-Painted Aluminum
20" x 8.5" Front and 20" x 9.5" Rear on SS
20" x 8.5" Front and Rear on LS or LT²
SS wheels paired with summer-only tires¹



5-Spoke Low-Gloss Black Aluminum
20" x 8.5" Front and 20" x 9.5" Rear on SS
20" x 8.5" Front and Rear on LS or LT
SS wheels paired with summer-only tires¹



5-Split-Spoke Premium Gray-Painted
Machined-Face Aluminum
20" x 8.5" Front and 20" x 9.5" Rear on SS
20" x 8.5" Front and Rear on LS or LT²
SS wheels paired with summer-only tires¹



50th Anniversary Machined-Face Aluminum
Wheels and Center Caps³
20" x 8.5" Front and 20" x 9.5" Rear on SS
20" x 8.5" Front and Rear on LT
SS wheels paired with summer-only tires¹



5-Spoke Gloss Black with Red Outline Stripe⁴
20" x 8.5" Front and 20" x 9.5" Rear on SS
20" x 8.5" Front and Rear on LS or LT
SS wheels paired with summer-only tires¹



5-Split-Spoke Low-Gloss Black⁵
20" x 8.5" Front and 20" x 9.5" Rear on SS
20" x 8.5" Front and Rear on LS or LT
SS wheels paired with summer-only tires¹



5-Split-Spoke Black-Painted Forged-Aluminum⁶
paired with summer-only tires¹
20" x 8.5" Front and 20" x 9.5" Rear on LS or LT



5-Split-Spoke Satin Graphite Forged-Aluminum⁶
paired with summer-only tires¹
20" x 10" Front and 20" x 11" Rear on SS



10-Split-Spoke Dark Graphite-Painted Forged-Aluminum
paired with summer-only tires¹
20" x 10" Front and 20" x 11" Rear on ZL1

¹ Do not use summer-only tires in winter conditions, as it would adversely affect vehicle safety, performance and durability. Use only GM-approved tire and wheel combinations. Unapproved combinations may change the vehicle's performance characteristics. For important tire and wheel information, go to my.chevrolet.com/learn/tires or see your dealer. ² Requires available RS Package. ³ Requires available 50th Anniversary Edition. ⁴ Requires available Red Accent Accessories Package. ⁵ Requires available Black Accent Accessories Package Level 2. ⁶ Requires available 1LE Performance Package.



COLORS



SUMMIT WHITE



SILVER ICE METALLIC



NIGHTFALL GRAY METALLIC



BRIGHT YELLOW¹



RED HOT



GARNET RED TINTCOAT¹



KRYPTON GREEN^{1, 2}



ARCTIC BLUE METALLIC



HYPER BLUE METALLIC¹

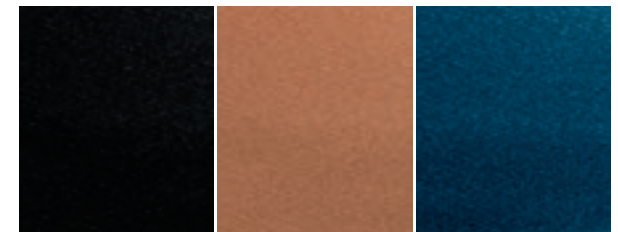


MOSAIC BLACK METALLIC



BLACK

CONVERTIBLE TOP COLORS



Black

Kalahari

Blue

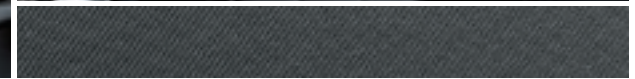
¹ Extra-cost color. ² Not available on ZL1. Limited production run. Late availability. ³ Available on 2LT and 2SS with 50th Anniversary Edition. Requires Convenience and Lighting Package on 2LT. ⁴ Available on 2LT and 2SS with Ceramic White Interior Accent Trim Package. Requires Convenience and Lighting Package on 2LT. ⁵ Available on 2LT and 2SS with Adrenaline Red Interior Accent Trim Package. Requires Convenience and Lighting Package on 2LT.



FABRICS



Jet Black/Dark Gray Leather with Orange Accents³



Medium Ash Gray Cloth



Jet Black Cloth



Ceramic White Leather⁴



Medium Ash Gray Leather



Kalahari Leather



Adrenaline Red Leather⁵



Jet Black Leather



PERFORMANCE

	CAMARO 1LS/LT	CAMARO 1LS/LT	CAMARO V6 1LE	CAMARO SS	CAMARO SS 1LE	CAMARO ZL1
ENGINE	2.0L turbocharged 4-cylinder	3.6L V6	3.6L V6	6.2L LT1 V8	6.2L LT1 V8	6.2L LT4 supercharged V8
BORE AND STROKE	86.00 mm x 86.00 mm	95.00 mm x 85.60 mm	95.00 mm x 85.60 mm	103.25 mm x 92.00 mm	103.25 mm x 92.00 mm	103.25 mm x 92.00 mm
COMPRESSION RATIO	9.5:1	11.5:1	11.5:1	11.5:1	11.5:1	10.0:1
HORSEPOWER	275 hp @ 5500 rpm	335 hp @ 6800 rpm	335 hp @ 6800 rpm	455 hp @ 6000 rpm	455 hp @ 6000 rpm	650 hp @ 6400 rpm
TORQUE	295 lb.-ft. @ 3000-4500 rpm	284 lb.-ft. @ 5300 rpm	284 lb.-ft. @ 5300 rpm	455 lb.-ft. @ 4400 rpm	455 lb.-ft. @ 4400 rpm	650 lb.-ft. @ 3600 rpm
REDLINE	7000 rpm	7200 rpm	7200 rpm	6500 rpm	6500 rpm	6600 rpm
AXLE RATIO	3.27:1 (manual) 3.27:1 (automatic, LT only)	3.27:1 (manual) 2.77:1 (automatic, LT only)	3.27:1 (manual)	3.73:1 (manual) 2.77:1 (automatic)	3.73:1 (manual)	3.73:1 (manual) 2.85:1 (automatic Coupe) 2.77:1 (automatic Convertible)
0 TO 60 (BASED ON INITIAL VEHICLE MOVEMENT)	5.5 seconds (automatic Coupe, LT only) 5.6 seconds (manual Convertible) 5.7 seconds (automatic Convertible, LT only)	5.2 seconds (manual Coupe) 5.1 seconds (automatic Coupe, LT only) 5.4 seconds (manual Convertible) 5.3 seconds (automatic Convertible, LT only)	5.2 seconds (manual)	4.3 seconds (manual Coupe) 4.0 seconds (automatic Coupe) 4.5 seconds (manual Convertible) 4.2 seconds (automatic Convertible)	4.2 seconds (manual)	3.7 seconds (manual Coupe) 3.5 seconds (automatic Coupe) 3.9 seconds (manual Convertible) 3.7 seconds (automatic Convertible)
QUARTER MILE	14.0 seconds @ 100 mph (manual Coupe) 14.0 seconds @ 99 mph (automatic Coupe, LT only) 14.2 seconds @ 99 mph (manual Convertible) 14.2 seconds @ 98 mph (automatic Convertible, LT only)	13.7 seconds @ 102 mph (manual Coupe) 13.5 seconds @ 103 mph (automatic Coupe, LT only) 13.9 seconds @ 101 mph (manual Convertible) 13.7 seconds @ 102 mph (automatic Convertible, LT only)	13.7 seconds @ 102 mph (manual)	12.5 seconds @ 115 mph (manual Coupe) 12.3 seconds @ 116 mph (automatic Coupe) 12.7 seconds @ 114 mph (manual Convertible) 12.5 seconds @ 115 mph (automatic Convertible)	12.5 seconds @ 115 mph (manual)	11.8 seconds @ 125 mph (manual Coupe) 11.4 seconds @ 127 mph (automatic Coupe) 12.0 seconds @ 124 mph (manual Convertible) 11.6 seconds @ 126 mph (automatic Convertible)
SKID PAD (MAXIMUM LATERAL ACCELERATION)	0.85 g	0.89 g	0.97 g	0.97 g (Coupe) 0.95 g (Convertible)	1.02 g	1.02 g (Coupe) 1.00 g (Convertible)
TOP SPEED	149 mph	149 mph	155 mph	180 mph (Coupe) 155 mph (Convertible)	175 mph	–
BRAKING SYSTEM	4-wheel antilock, 4-wheel disc Available: Brembo® 4-piston front, performance	4-wheel antilock, 4-wheel disc Available: Brembo 4-piston front, performance	4-wheel antilock, 4-wheel disc Brembo 4-piston front, performance	4-wheel antilock, 4-wheel disc Brembo 4-piston front and rear, performance	4-wheel antilock, 4-wheel disc Brembo 6-piston monobloc front and 4-piston rear, performance	4-wheel antilock, 4-wheel disc Brembo 6-piston monobloc front and 4-piston rear, performance
BRAKING DISTANCE (60 TO 0 MPH)	129 ft.	124 ft. (Coupe with available RS Package) 127 ft. (Convertible)	112 ft.	117 ft. (Coupe) 120 ft. (Convertible)	107 ft.	107 ft. (Coupe) 110 ft. (Convertible)
CURB WEIGHT	3,354 lbs. (manual Coupe) 3,339 lbs. (automatic Coupe, LT only) 3,647 lbs. (manual Convertible) 3,627 lbs. (automatic Convertible, LT only)	3,448 lbs. (manual Coupe) 3,435 lbs. (automatic Coupe, LT only) 3,715 lbs. (manual Convertible) 3,709 lbs. (automatic Convertible, LT only)	3,490 lbs.	3,685 lbs. (manual Coupe) 3,697 lbs. (automatic Coupe) 3,956 lbs. (manual Convertible) 3,969 lbs. (automatic Convertible)	3,747 lbs.	3,883 lbs. (manual Coupe) 3,944 lbs. (automatic Coupe) 4,113 lbs. (manual Convertible) 4,148 lbs. (automatic Convertible)
WHEELS	18" Silver-painted aluminum	18" Silver-painted aluminum	20" 5-split-spoke forged-aluminum (20" x 8.5" front and 20" x 9.5" rear)	20" 5-spoke Bright Silver-painted aluminum (20" x 8.5" front and 20" x 9.5" rear)	20" 5-split-spoke forged-aluminum (20" x 10" front and 20" x 11" rear)	20" 10-split-spoke forged-aluminum (20" x 10" front and 20" x 11" rear)
TIRES	245/50R18 all-season blackwall	245/50R18 all-season blackwall	245/40ZR20 front and 275/35ZR20 rear, summer-only ¹ blackwall, run-flat	245/40ZR20 front and 275/35ZR20 rear, summer-only ¹ blackwall, run-flat	285/30R20 front and 305/30R20 rear, summer-only ¹ blackwall	285/30R20 front and 305/30R20 rear, summer-only ¹ blackwall
WEIGHT DISTRIBUTION (F/R)	52/48	52/48	52/48	54/46	54/46	54/46



SELECT VEHICLE FEATURES

CAMARO 1LS

2.0L 275-hp turbocharged 4-cylinder engine with Direct Injection
6-speed manual transmission
Dual-outlet stainless steel exhaust with bright tips
Driver Mode Selector with 3 modes: Snow/Ice, Tour and Sport
OnStar Guidance Plan ² (standard for the first three months, trial excludes Hands-Free Calling minutes), includes Automatic Crash Response and Turn-by-Turn Navigation
StabiliTrak [®] Electronic Stability Control System with Traction Control
LED daytime running lamps
Teen Driver technology
Rear vision camera
18" Silver-painted aluminum wheels
Keyless Open and Start
Chevrolet MyLink ³ Radio with 7-inch diagonal color touch-screen display, featuring Android Auto [™] and Apple CarPlay [™] compatibility ⁴
Auxiliary input jack and 2 USB ports ⁵
Bluetooth [®] wireless technology ⁶ for select phones
SiriusXM Satellite Radio ⁷ All Access Package with 12-month trial subscription
Driver Information Center with color display
Leather-wrapped flat-bottom steering wheel with steering wheel-mounted controls for audio and cruise
Front sport buckets with 8-way power driver-seat adjuster and 6-way power passenger-seat adjuster
OnStar Basic Plan ⁸ for five years includes select features of the myChevrolet Mobile App ⁹ including remote start (if equipped), door lock or unlock, honk your horn and flash your lights, and send destinations to your Chevrolet MyLink ³ navigation screen (if equipped). Limited OnStar services include Advanced Diagnostics and Dealer Maintenance Notification
OnStar 4G LTE and built-in Wi-Fi [®] hotspot for up to seven devices ¹⁰ includes data trial for 3 months or 3 GB (whichever comes first)

CAMARO 1LT In addition to or replacing LS features, 1LT includes:

8-speed paddle-shift automatic transmission
Remote vehicle starter system

CAMARO 2LT In addition to or replacing 1LS features, 2LT includes:

Chevrolet MyLink ³ Radio with 8-inch diagonal color touch-screen display, featuring Android Auto and Apple CarPlay compatibility ⁴
Bose [®] premium 9-speaker (Coupe) or 7-speaker (Convertible) audio system
Dual-zone automatic climate control with individual climate settings for driver and front passenger, dedicated passenger controls and outside temperature display
Heated and ventilated leather-trimmed seats for driver and front passenger
Universal Home Remote

CAMARO 1SS In addition to or replacing 1LS features, 1SS includes:

6.2L 455-hp V8 engine with Direct Injection
Limited-slip rear differential
Brembo performance 4-wheel disc brakes with ABS, 4-piston front and rear
High-intensity discharge headlamps with LED signature and automatic exterior lamp control and LED daytime running lamps
20" Bright Silver-painted 5-spoke aluminum wheels (20" x 8.5" front, 20" x 9.5" rear)
Enhanced Driver Information Center with 8-inch diagonal reconfigurable color display
Driver Mode Selector with 4 modes: Snow/Ice, Tour, Sport and Track

CAMARO 2SS In addition to or replacing 1SS features, 2SS includes:

Head-Up Display with color digital readouts for vehicle speed, selected gear, g force, audio system information, high beam indicator, compass, outside air temperature, turn signals, tachometer, vehicle messages, turn-by-turn navigation information and phone information
Bose premium 9-speaker (Coupe) or 7-speaker (Convertible) audio system
Interior spectrum lighting with 24 different color selections
Memory Package: 2-position memory for 8-way power driver seat and outside mirrors
Dual-zone automatic climate control with individual climate settings for driver and front passenger, dedicated passenger controls and outside temperature display
Heated and ventilated leather-trimmed seats for driver and front passenger
Aluminum accents on door trim and shifter cap
Illuminated door sill plates
Wireless charging ¹¹

CAMARO ZL1 In addition to or replacing 2SS features, ZL1 includes:

6.2L 650-hp supercharged V8 engine with Direct Injection
Launch control
Electronic Limited-Slip Differential (Coupe only)
Magnetic Ride Control suspension
Dual-mode performance exhaust system
Brembo performance 4-wheel disc brakes with ABS, 6-piston front and 4-piston rear
20" Dark Graphite-painted 10-split-spoke forged-aluminum wheels (20" x 10" front, 20" x 11" rear)
RECARO [®] performance seats with Jet Black leather appointments and Red accents and sueded inserts
Sueded microfiber-wrapped steering wheel and shifter
Sport alloy pedals

¹ Do not use summer-only tires in winter conditions, as it would adversely affect vehicle safety, performance and durability. Use only GM-approved tire and wheel combinations. Unapproved combinations may change the vehicle's performance characteristics. For important tire and wheel information, go to my.chevrolet.com/learn/tires or see your dealer. ² Visit onstar.com for coverage map, details and system limitations. OnStar acts as a link to existing emergency service providers. Not all vehicles may transmit all crash data. ³ MyLink functionality varies by model. Full functionality requires compatible Bluetooth and smartphone, and USB connectivity for some devices. Map coverage available in the United States, Puerto Rico and Canada. MyLink on Camaro does not include CD player. ⁴ Vehicle user interfaces are products of Apple and Google and their terms and privacy statements apply. Requires compatible smartphone and data plan rates apply. ⁵ Not compatible with all devices. ⁶ Visit my.chevrolet.com/learn for vehicle and smartphone compatibility. ⁷ If you decide to continue service after your trial, the subscription plan you choose will automatically renew thereafter and you will be charged according to your chosen payment method at then-current rates. Fees and taxes apply. To cancel you must call SiriusXM at 1-866-635-2349. See SiriusXM Customer Agreement for complete terms at siriusxm.com. All fees and programming subject to change. ⁸ Does not include emergency or security services. Visit onstar.com for coverage map, details and system limitations. ⁹ Requires data plan, compatible vehicle and compatible device. Some features require factory-installed remote start, power locks, Tire Pressure Monitoring System or active OnStar service. ¹⁰ Requires a compatible mobile device, active OnStar service and data plan. 4G LTE service available in select markets. Visit onstar.com for coverage map, details and system limitations. Data plans provided by AT&T. ¹¹ The system wirelessly charges one PMA- or Qi-compatible mobile device. Some devices require an adaptor or back cover. To check for phone or other device compatibility, visit my.chevrolet.com/learn for details.

DEALER ePROCESS

SPECIFICATIONS

● STANDARD ○ AVAILABLE – NOT AVAILABLE

	1LS/1LT	2LT	1SS	2SS	ZL1
EXTERIOR					
Headlamps: High-intensity discharge, automatic	○ ¹	○ ¹	●	●	●
Mirrors: Power-adjustable, body-color Heated, power-adjustable, body-color, with driver-side auto-dimming feature	●	●	●	–	–
Spoiler: Lip, decklid-mounted Stanchion	○ ¹ ○ ⁴	○ ³ ○ ⁴	–	–	–
Exposed carbon-fiber-weave hood insert	–	–	–	–	○ ⁵
GRAPHICS					
50th Anniversary Stripe	–	○ ⁶	–	○ ⁵	–
Black Center Stripe (Not available with Black)	○	○	–	–	–
Black Metallic Center Stripe (not available with Mosaic Black Metallic)	–	–	○	○	○ ^{7,8}
Silver Center Stripe (not available with Silver Ice Metallic)	○	○	○	○	–
White Pearl Center Stripe (not available with Summit White)	○	○	○	○	–
Black Rally Stripes (not available with Black)	○	○	–	–	–
Black Metallic Rally Stripes (not available with Mosaic Black Metallic)	–	–	○	○	–
Silver Rally Stripes (not available with Silver Ice Metallic)	○	○	○	○	–
White Pearl Rally Stripes (not available with Summit White)	○	○	○	○	–
ENGINE/CHASSIS					
Brakes: 4-wheel antilock disc Brembo® 4-piston front, performance, 4-wheel antilock disc	●	●	–	–	–
Brembo 4-piston front and rear, performance, 4-wheel antilock disc	○ ⁹	○ ¹⁰	–	–	–
Brembo 6-piston monobloc front, 4-piston rear, performance, 4-wheel antilock disc	–	–	●	●	–
50th Anniversary Orange-painted brake calipers (front calipers only on 2LT)	–	–	○ ¹¹	–	●

	1LS/1LT	2LT	1SS	2SS	ZL1
ENGINE/CHASSIS (CONTINUED)					
Cooling system: Extra-capacity	○ ⁹	○ ⁹	●	●	●
Differential: Limited-slip	○ ¹²	○ ¹²	●	●	–
Electronic Limited-Slip (eLSD)	–	–	○ ¹¹	–	○ ¹³
Rear differential cooler	–	–	●	●	●
Engine: 2.0L turbocharged 4-cylinder with Direct Injection and Variable Valve Timing; 275 hp and 295 lb.-ft. of torque	●	●	–	–	–
3.6L V6 with Direct Injection and Variable Valve Timing; 335 hp and 284 lb.-ft. of torque	○	○	–	–	–
6.2L LT1 V8 with Direct Injection and Variable Valve Timing; 455 hp and 455 lb.-ft. of torque	–	–	●	●	–
6.2L LT4 supercharged V8 with Direct Injection and Variable Valve Timing; 650 hp and 650 lb.-ft. of torque	–	–	–	–	●
Auxiliary engine coolant cooler	○ ⁹	○ ⁹	●	●	●
External engine oil cooler	○ ⁹	○ ⁹	●	●	●
Exhaust system: Dual-mode performance with quad outlets	○ ¹⁴	○ ¹⁴	○	○	●
Dual-outlet stainless steel with polished tips	●	●	●	●	–
Suspension: 4-wheel independent, sport	●	●	–	–	–
4-wheel independent, performance	–	–	●	●	●
Magnetic Ride Control	–	–	○	○	●
Transmission: 6-speed manual with Hill Hold feature	○ ¹⁵	●	● ¹⁶	● ¹⁶	● ¹⁶
8-speed paddle-shift automatic	○ ^{17,18}	○ ¹⁸	○ ¹⁹	○ ¹⁹	–
10-speed paddle-shift automatic	–	–	–	–	○
Transmission oil cooler	–	–	●	●	●

	1LS/1LT	2LT	1SS	2SS	ZL1
SAFETY & SECURITY					
Air bags: ²⁹ Dual-stage frontal and knee (Coupe/Convertible); head-curtain and thorax side-impact (Coupe); head and thorax side-impact (Convertible) for driver and front passenger; includes Passenger Sensing System	●	●	●	●	●
Head-Up Display: Color	–	○ ²	○ ¹¹	●	●
OnStar Guidance Plan ²¹ (standard for the first three months, trial excludes Hands-Free Calling minutes), includes Automatic Crash Response and Turn-by-Turn Navigation	●	●	●	●	●
Rear Park Assist	–	○ ²	–	●	●
Rear Cross Traffic Alert	–	○ ²	–	●	●
Remote vehicle starter system	○ ²²	○ ²²	○ ²²	○ ²²	○ ²³
Side Blind Zone Alert	–	○ ²	–	●	●
INTERIOR					
Air conditioning: Single-zone automatic climate control	●	–	●	–	–
Dual-zone automatic climate control with dedicated passenger controls	–	●	–	●	●
Carbon-fiber instrument panel molding	–	–	–	–	○ ²⁴
Driver Information Center (DIC): Color Enhanced, with 8-inch diagonal reconfigurable multi-color display	●	●	–	–	–
Lighting: Front reading lamps and interior dome lamp with illuminated entry	●	●	●	●	●
Interior spectrum with 24 different color selections	–	○ ²	–	●	●
Mirror: Rearview manual day/night, frameless	●	–	●	–	–
Auto-dimming	–	●	–	●	●
Sunroof: Power	○	○	○	○	○
Wireless charging ²⁵	–	○ ²	–	●	●

¹ Requires available RS Package. ² Requires available Convenience and Lighting Package. ³ Requires available RS Package or 50th Anniversary Edition. ⁴ Convertible only. ⁵ Not available with Black Metallic Center Stripe. ⁶ Requires available 50th Anniversary Edition. ⁷ Not available with exposed carbon-fiber-weave hood insert. ⁸ Roof, decklid and spoiler on Coupe only. Decklid, tonneau cover and spoiler on Convertible only. ⁹ Requires available Heavy-Duty Cooling and Brake Package. ¹⁰ Requires available Heavy-Duty Cooling and Brake Package or 50th Anniversary Edition. Requires available 50th Anniversary Edition on 2LT Convertible. ¹¹ Requires available SS 1LE Performance Package. ¹² Requires 6-speed manual transmission. ¹³ Coupe only. ¹⁴ Requires available 3.6L V6 engine or V6 1LE Performance Package. ¹⁵ Not available on 1LT. ¹⁶ Includes Active Rev Matching. ¹⁷ Not available on 1LS. ¹⁸ Includes Active Fuel Management with available 3.6L V6 engine. ¹⁹ Includes Active Fuel Management. ²⁰ A NOTE ON CHILD SAFETY: Always use safety belts and the correct child restraint for your child's age and size, even with air bags. Even in vehicles equipped with the Passenger Sensing System, children are safer when properly secured in a rear seat in the appropriate infant, child or booster seat. Never place a rear-facing infant restraint in the front seat of any vehicle equipped with an active frontal air bag. See the Owner's Manual and the child safety seat instructions for more safety information. ²¹ Visit onstar.com for coverage map, details and system limitations. OnStar acts as a link to existing emergency service providers. ²² Requires available 8-speed automatic transmission. ²³ Requires available 10-speed automatic transmission. ²⁴ Interim availability. ²⁵ The system wirelessly charges one PMA- or Qi-compatible mobile device. Some devices require an adaptor or back cover. To check for phone or other device compatibility, visit my.chevrolet.com/learn for details. ²⁶ MyLink functionality varies by model. Full functionality requires compatible Bluetooth and smartphone, and USB connectivity for some devices. MyLink on Camaro does not include CD player. ²⁷ Visit my.chevrolet.com/learn for vehicle and smartphone compatibility. ²⁸ Vehicle user interfaces are products of Apple and Google and their terms and privacy statements apply. Requires compatible smartphone and data plan rates apply. ²⁹ Requires available Technology Package. ³⁰ Map coverage available in the United States, Puerto Rico and Canada. ³¹ Requires available V6 1LE Performance Package. ³² Not available on Convertible. ³³ If you decide to continue service after your trial, the subscription plan you choose will automatically renew thereafter and you will be charged according to your chosen payment method at then-current rates. Fees and taxes apply. To cancel you must call SiriusXM at 1-866-635-2349. See SiriusXM

DEALER ePROCESS

	1LS/1LT	2LT	1SS	2SS	ZL1
ENTERTAINMENT					
Chevrolet MyLink ²⁶ Radio with 7-inch diagonal color touch-screen display, AM/FM stereo with seek-scan and digital clock, includes Bluetooth [®] audio streaming ²⁷ for select phones; featuring Apple CarPlay [™] and Android Auto [™] compatibility ²⁸	●	-	-	-	-
Chevrolet MyLink ²⁶ Radio with 8-inch diagonal color touch-screen display, includes features listed above	○ ²⁹	●	●	●	●
Chevrolet MyLink ²⁶ Radio with Navigation, ³⁰ includes 8-inch diagonal color touch-screen display and GPS navigation system	-	○	-	○	○
Performance Data Recorder and video recorder	-	○ ^{2,31}	○ ¹¹	-	○ ³²
Bose [®] premium 7-speaker (Convertible) or 9-speaker (Coupe) audio system	○ ²⁹	●	-	●	●
SiriusXM Satellite Radio ³³ All Access Package with 12-month trial subscription	●	●	●	●	●
OnStar Basic Plan ³⁴ for five years includes select features of the myChevrolet Mobile App ³⁵ including remote start (if equipped), door lock or unlock, honk your horn and flash your lights, and send destinations to your Chevrolet MyLink ²⁶ navigation screen (if equipped). Limited OnStar services include Advanced Diagnostics and Dealer Maintenance Notification	●	●	●	●	●
OnStar 4G LTE and built-in Wi-Fi [®] hotspot for up to seven devices, ³⁶ includes data trial for 3 months or 3 GB (whichever comes first)	●	●	●	●	●
WHEELS					
18" Silver-painted aluminum	●	●	-	-	-
20" 5-spoke Bright Silver-painted aluminum wheels paired with summer-only tires ³⁷ (20" x 8.5" front, 20" x 9.5" rear)	-	-	●	●	-
20" 5-split-spoke premium Gray-painted machined-face aluminum	○ ¹	○ ¹	-	-	-
20" 5-spoke low-gloss Black aluminum	○	○	-	-	-
20" 5-split-spoke Bright Silver-painted aluminum	○ ¹	○ ¹	-	-	-

	1LS/1LT	2LT	1SS	2SS	ZL1
WHEELS (CONTINUED)					
20" 5-split-spoke premium Gray-painted machined-face aluminum wheels paired with summer-only tires ³⁷ (20" x 8.5" front, 20" x 9.5" rear)	-	-	○	○	-
20" 5-split-spoke Bright Silver-painted aluminum wheels paired with summer-only tires ³⁷ (20" x 8.5" front, 20" x 9.5" rear)	-	-	○	○	-
20" 5-spoke low-gloss Black aluminum wheels paired with summer-only tires ³⁷ (20" x 8.5" front, 20" x 9.5" rear)	-	-	○	○	-
20" 5-split-spoke Black-painted forged-aluminum wheels paired with summer-only tires ³⁷ (20" x 8.5" front, 20" x 9.5" rear)	○ ³¹	○ ³¹	-	-	-
20" 5-split-spoke Satin Graphite forged-aluminum wheels paired with summer-only tires ³⁷ (20" x 10" front, 20" x 11" rear)	-	-	○ ¹¹	-	-
20" 10-split-spoke Dark Graphite-painted forged-aluminum wheels paired with summer-only tires ³⁷ (20" x 10" front, 20" x 11" rear)	-	-	-	-	●
PACKAGES					
RS Package	○	○	-	-	-
20" 5-split-spoke premium Gray-painted machined-face aluminum wheels, high-intensity discharge headlamps, LED taillamps, RS-specific grilles and decklid-mounted lip spoiler (Coupe only)					
Heavy-Duty Cooling and Brake Package	○ ¹	○ ¹	-	-	-
External engine oil cooler, extra-capacity cooling system and 4-piston Brembo performance (front calipers only) 4-wheel disc brakes with ABS; also includes auxiliary engine coolant cooler					
Technology Package	○	-	-	-	-
Chevrolet MyLink ²⁶ Radio with 8-inch diagonal color touch-screen display and Bose premium 7-speaker (Convertible) or 9-speaker (Coupe) audio system					
Convenience and Lighting Package	-	○	-	-	-
Memory Package, wireless charging; ²⁵ heated steering wheel, enhanced Driver Information Center with 8-inch diagonal reconfigurable multi-color display, Head-Up Display, Rear Park Assist, Rear Cross Traffic Alert, Side Blind Zone Alert with Lane Change Alert, outside heated power-adjustable body-color mirrors with driver-side auto-dimming feature, interior spectrum lighting, illuminated door sill plates, and aluminum accents on door trim and shifter cap					

	1LS/1LT	2LT	1SS	2SS	ZL1
PACKAGES (CONTINUED)					
Adrenaline Red Interior Accent Trim Package	-	○ ²	-	○	-
Black interior with Adrenaline Red seat inserts, door inserts and stitching on front seats, doors, steering wheel, shifter and center console (not available with Bright Yellow or Hyper Blue Metallic exterior colors)					
Ceramic White Interior Accent Trim Package	-	○ ²	-	○	-
Black interior with Ceramic White seat inserts, door inserts and stitching on front seats, doors, steering wheel, shifter and center console					
2LT 50th Anniversary Edition	-	○ ^{2,38}	-	-	-
Nightfall Gray Metallic exterior color, "FIFTY" exterior badge, 20" 50th Anniversary wheels and center caps, 245/40R20 blackwall all-season run-flat tires, 50th Anniversary stripe, body-color front splitter, RS Package, Orange-painted front brake calipers, 4-piston Brembo performance (front calipers only) 4-wheel antilock 4-wheel disc brakes, Jet Black/Dark Gray front leather-trimmed seating with sueded inserts and Orange accent stitching, illuminated door sill plates, and 50th Anniversary treatment on seatbacks and steering wheel					
2SS 50th Anniversary Edition	-	-	-	○ ³⁸	-
Nightfall Gray Metallic exterior color, "FIFTY" exterior badge, 20" 50th Anniversary wheels and center caps, 50th Anniversary stripe, body-color front splitter, Orange-painted brake calipers, Jet Black/Dark Gray front leather-trimmed seating with sueded inserts and Orange accent stitching, illuminated door sill plates, and 50th Anniversary treatment on seatbacks and steering wheel					
V6 1LE Performance Package	○ ³⁹	○ ⁴⁰	-	-	-
Black hood wrap, Black outside rearview mirrors, larger front grille openings, front splitter, rear blade spoiler, Black 20" forged-aluminum wheels with 245/40R20 (front) and 275/35R20 (rear) summer-only tires; ³⁷ suede-wrapped flat-bottom steering wheel, Brembo 4-piston front brake calipers, FE3 suspension components (from Camaro SS) including dampers, rear cradle mounts, ball-jointed rear toe links and stabilizer bars, heavy-duty cooling including engine oil cooler, dual outboard radiators and transmission cooler, dual-mode exhaust and limited-slip differential					
SS 1LE Performance Package	-	-	○ ⁴¹	-	-
Black hood wrap, Black outside rearview mirrors, front splitter, rear blade spoiler, Satin Graphite 20" forged-aluminum wheels with Goodyear Eagle F1 SuperCar 285/30R20 (front) and 305/30R20 (rear) summer-only tires ³⁷ RECARO [®] performance seats, suede-wrapped flat-bottom steering wheel and shift knob, color Head-Up Display, Brembo brakes with 6-piston monobloc front two-piece rotors and 4-piston rear calipers, dual-mode exhaust, Magnetic Ride Control, Electronic Limited-Slip Differential (eLSD), Performance-Tuned suspension with unique bushings, springs and stabilizer bars, and heavy-duty cooling including engine oil cooler, dual outboard radiators, transmission cooler and rear differential cooler					

Customer Agreement for complete terms at siriusxm.com. All fees and programming subject to change. **34** Does not include emergency or security services. Visit onstar.com for coverage map, details and system limitations. **35** Requires data plan, compatible vehicle and compatible device. Some features require factory-installed remote start, power locks, Tire Pressure Monitoring System or active OnStar service. **36** Requires a compatible mobile device, active OnStar service and data plan. 4G LTE service available in select markets. Visit onstar.com for coverage map, details and system limitations. Data plans provided by AT&T. **37** Do not use summer-only tires in winter conditions, as it would adversely affect vehicle safety, performance and durability. Use only GM-approved tire and wheel combinations. Unapproved combinations may change the vehicle's performance characteristics. For important tire and wheel information, go to my.chevrolet.com/learn/tires or see your dealer. **38** Convertible requires Black top. **39** Requires Jet Black interior color, 6-speed manual transmission and available 3.6L V6 engine. Not available with RS Package. **40** Requires Jet Black interior color, 6-speed manual transmission and available 3.6L V6 engine. Not available with RS Package or 2LT 50th Anniversary Edition. **41** Requires Jet Black interior color and 6-speed manual transmission. Not available with power sunroof or Convertible models.

DEALER ePROCESS



Experience Chevrolet Complete Care, a comprehensive coverage, warranty and protection program that comes standard with every new 2017 Chevrolet Camaro lease and purchase. Simply, it is designed around you, to make it easy to keep your Chevrolet like new – and give you the confidence you deserve when you need it most.

YOUR COMPREHENSIVE OWNER BENEFIT PROGRAM.

Includes two maintenance visits (oil changes, tire rotations [excludes Camaro ZL1 and models with available 1LE Performance Package, due to their unidirectional tires; see Owner's Manual for details] and multipoint vehicle inspections)¹

5 years/60,000 miles of Roadside Assistance and Courtesy Transportation²

5-year/60,000-mile Powertrain Limited Warranty²

3-year/36,000-mile Bumper-to-Bumper Warranty²

6 years/100,000 miles of Rust-Through Protection²

5 years of OnStar Basic Plan³ including select features of the myChevrolet Mobile App⁴

3 months of OnStar Guidance Plan⁵

DIMENSIONS

Width	74.7" (LS, LT and SS) 75.0" (ZL1)
Front Track	62.6" (LS and LT) 63.1" (SS) 63.4" (ZL1)
Rear Track	63.7" (LS and LT) 63.1" (SS) 62.0" (ZL1)

Length	188.3" (LS, LT and SS) 190.2" (ZL1)
Wheelbase	110.7"
Height	53.1" (LS, LT and SS Coupe) 52.9" (LS, LT and SS Convertible and ZL1 Coupe) 52.6" (ZL1 Convertible)

MAXIMUM CAPACITIES

EPA-ESTIMATED FUEL ECONOMY

2.0L Turbo	22 MPG city/31 highway/25 combined (automatic) 20 MPG city/30 highway/23 combined (manual)
3.6L V6	19 MPG city/28 highway/22 combined (automatic) 16 MPG city/28 highway/20 combined (manual)
6.2L V8	17 MPG city/27 highway/20 combined (automatic) 16 MPG city/25 highway/19 combined (manual)
6.2L Supercharged V8	Official EPA estimates not yet available (automatic) 14 MPG city/20 highway/16 combined (manual)

FUEL TANK (APPROXIMATE)

19 gallons

CARGO VOLUME⁶

9.1 cubic feet (Coupe)
7.3 cubic feet (Convertible, top up)

OWNERSHIP EXTRAS

CHEVROLET



CHEVROLET.COM/WARRANTY

CHEVROLET



CHEVROLET.COM/ACCESSORIES



ONSTAR.COM



SIRIUSXM.COM

NEW VEHICLE LIMITED WARRANTY

5-YEAR/60,000-MILE TRANSFERABLE POWERTRAIN LIMITED WARRANTY Every 2017 Chevrolet Camaro comes with a 5-year/60,000-mile (whichever comes first) transferable Powertrain Limited Warranty. 24/7 Roadside Assistance and Courtesy Transportation are also offered for the duration of the Powertrain Limited Warranty. Please see your Chevrolet dealer for details.

3-YEAR/36,000-MILE BUMPER-TO-BUMPER LIMITED WARRANTY Chevrolet will warrant each 2017 Camaro from bumper to bumper for 3 years/36,000 miles (whichever comes first; see dealer for details), with no deductible, from the original in-service date of the vehicle, for warrantable repairs that are required as a result of defects due to material and/or workmanship. Cosmetic corrosion resulting from defects is also covered under the Bumper-to-Bumper Limited Warranty. In addition, rust-through corrosion will be covered for 6 years/100,000 miles (whichever comes first). See dealer for details.

