

2012 COUPE AND CONVERTIBLE V6

CAMARO PURE



PURE THINKING

Pure emotion. Either way, it's impossible to approach Camaro without being drawn to its essence. It is an expression of power and control, of style and adrenaline, rendered in steel, aluminum, rubber and glass. Wipe your slate clean of preconceptions.

It's 2012. Camaro exists not to look back, but forward. From deep-set eyes to sculptured rear shoulders, every detail hints at its mysterious allure, an innate ability to quicken the pulse, to turn a casual encounter into a stunning realization that things don't have to be ordinary. They just need to be fun. Seriously fun.

Camaro 2LT shown in Silver Ice Metallic with available RS Package.





CLEANSE

With Camaro Coupe, define performance on your terms. Just check out the specs. Then create for yourself the Camaro you've always dreamed of driving. Like the new 45th Anniversary Special Edition shown here. It is a celebration of exclusivity inside and out. And that enhanced V6 engine under its muscular hood has all the power it needs to scrub away any trace of what you once settled for in a car.

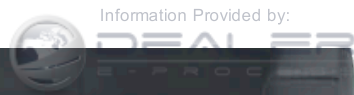
YOUR

Inside Camaro, there's a cool, clean new look. Grab the redesigned steering wheel, scan the refined instrument graphics, and take in the appointments throughout. There's even a new, available Rear Vision Package with a rear vision camera and an auto-dimming mirror to help you keep an eye on things. How refreshing.

SOUL



Camaro 2LT 45th Anniversary Special Edition exclusively in Carbon Flash Metallic.



V6 COUPE



POETIC ENGINEERING

Thanks to a top structure that uses aluminum for the front roof bow, front rail and rear side rails, then links it all to stamped and tubular steel cross members, Camaro Convertible maintains a muscular top-up profile that closely mimics the Coupe. Lower the top to reveal the seats. Thick bolsters on supportive structures let you feel confident and comfortable. The meticulous stitching is evidence of the craftsmanship that goes into every aspect of the interior.

Camaro Convertible. The world's shortest poem, perhaps, just two words. What else is there to say? Quite a bit, in truth. But let's leave logic for the next paragraph, and linger awhile on Camaro Convertible. It takes less than 20 seconds for its top to automatically retract and stow neatly away. 20 seconds to transform the closed cockpit into an open-air venue that takes it all in. The sky, the sun, the city, the road. How long for you to transform as well? Not much longer than 20 seconds. If that.





There's a reason it looks beautiful, top up or top down—Camaro designers developed a convertible top that closely follows the shape of the Coupe roofline. A wide, heated glass rear window and insulated fabric top add to this remarkable driving experience.



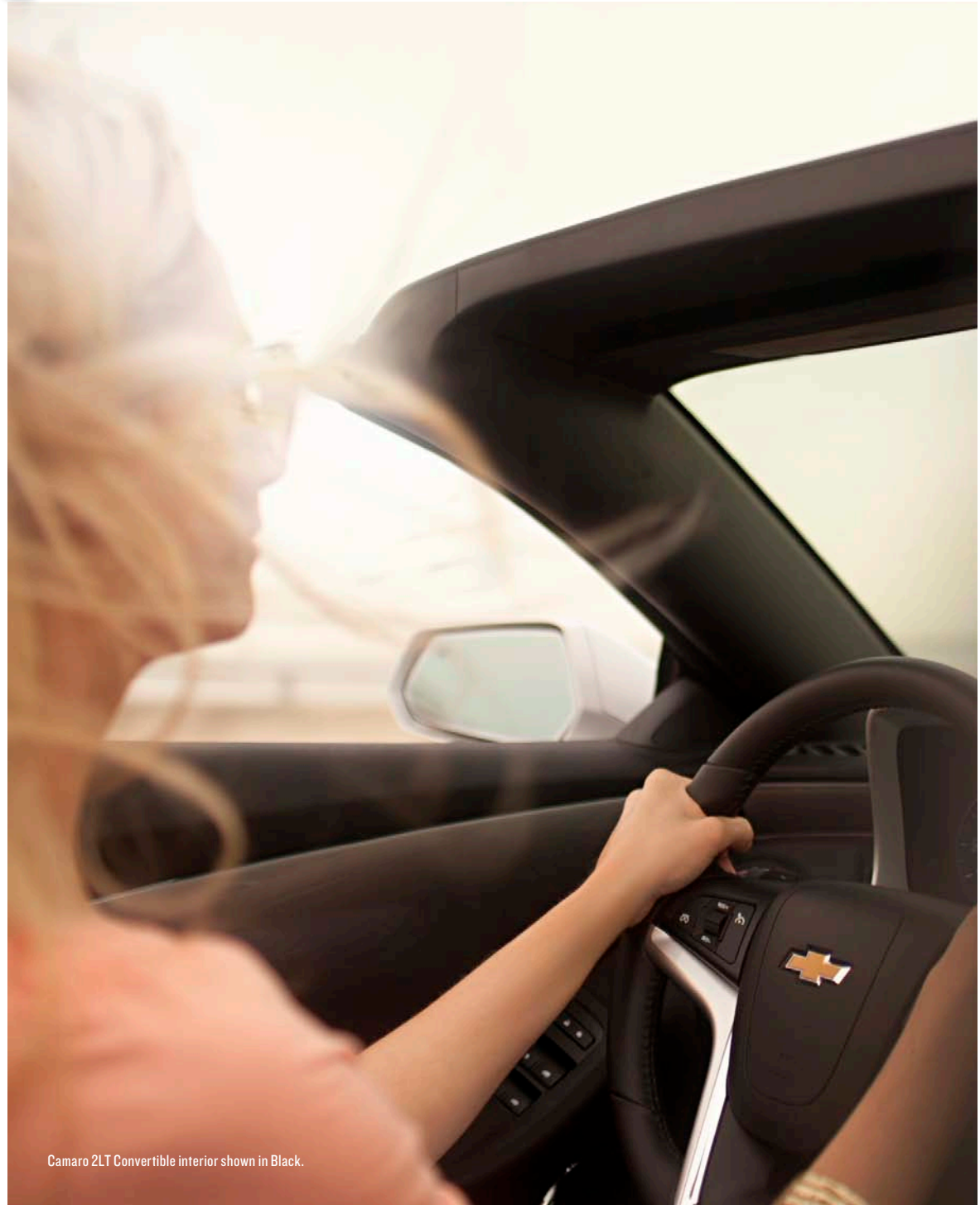
How you feel behind the wheel is everything in a Camaro, and driving a convertible is no different. That's why the Convertible features an aluminum tower-to-tower brace combined with a pair of underbody V-braces for added reinforcement.



iPhone is a registered trademark of Apple Inc., registered in the U.S. and other countries.

The available USB port¹ in the console connects your MP3 player to the audio system. You can also plug in and play a music-loaded flash drive.

¹ Not compatible with all devices.



Camaro 2LT Convertible interior shown in Black.



Direct injection. It's the technology at the heart of the new Camaro LFX 3.6-liter V6 that helps boost output to 323 horses. It injects fuel closer to the combustion chamber for an efficient, powerful "burn." At partial or full throttle, you'll feel more punch—without penalty. The EPA estimate is 30 MPG highway for the 2LS Coupe. Go on. Have your cake.

**UP TO
30 MPG**

OUT ER WOW

PERSONALIZE AND

ACCESSORIZE IT

Wherever it appears, Camaro makes a statement. And you can make it personal, with a wide range of available dealer-installed Chevrolet Accessories including a Ground Effects Package, body-color engine cover, 21-inch aluminum wheels,¹ blade rear spoiler, striping packages and much more. Camaro is more than a thing of beauty. It's one of a kind.

¹ Use only GM-approved tire and wheel combinations. See Specifications page disclosures 1 and 2 for important details.

GROUND EFFECTS PACKAGE: FRONT SPLITTER, EXTENDED SIDE ROCKER PANELS AND REAR DIFFUSER WITH CHROME EXHAUST BEZELS.



21-INCH
CAST-ALUMINUM
POLISHED WHEELS¹



BLADE REAR SPOILER



HERITAGE UPPER GRILLE AND
GROUND EFFECTS PACKAGE

¹ Use only GM-approved tire and wheel combinations. See Specifications page disclosures 1 and 2 for important details.

Camaro ILT shown in Crystal Red Tintcoat (extra-cost color) with dealer-installed accessories and other available features.



R

D

MEET TOM PETERS, THE GUY WHO LEADS THE CAMARO EXTERIOR DESIGN TEAM:

“When we got the green light to create a new Camaro, I got a few young designers together in Studio X, a makeshift space down in the basement that’s kind of hallowed ground—there’s history down there—and said, ‘Draw the meanest street-fighting dog you can.’ They didn’t have preconceived notions of what a Camaro should be. I got some great sketches. But there’s a phrase we have around here. We say, ‘Meet you in the clay.’ It means that you might have two really cool sketches competing for a new car’s design, but until you see it in dimension, in a clay model form, and park them next to each other, you can’t truly know which personality should win out.”

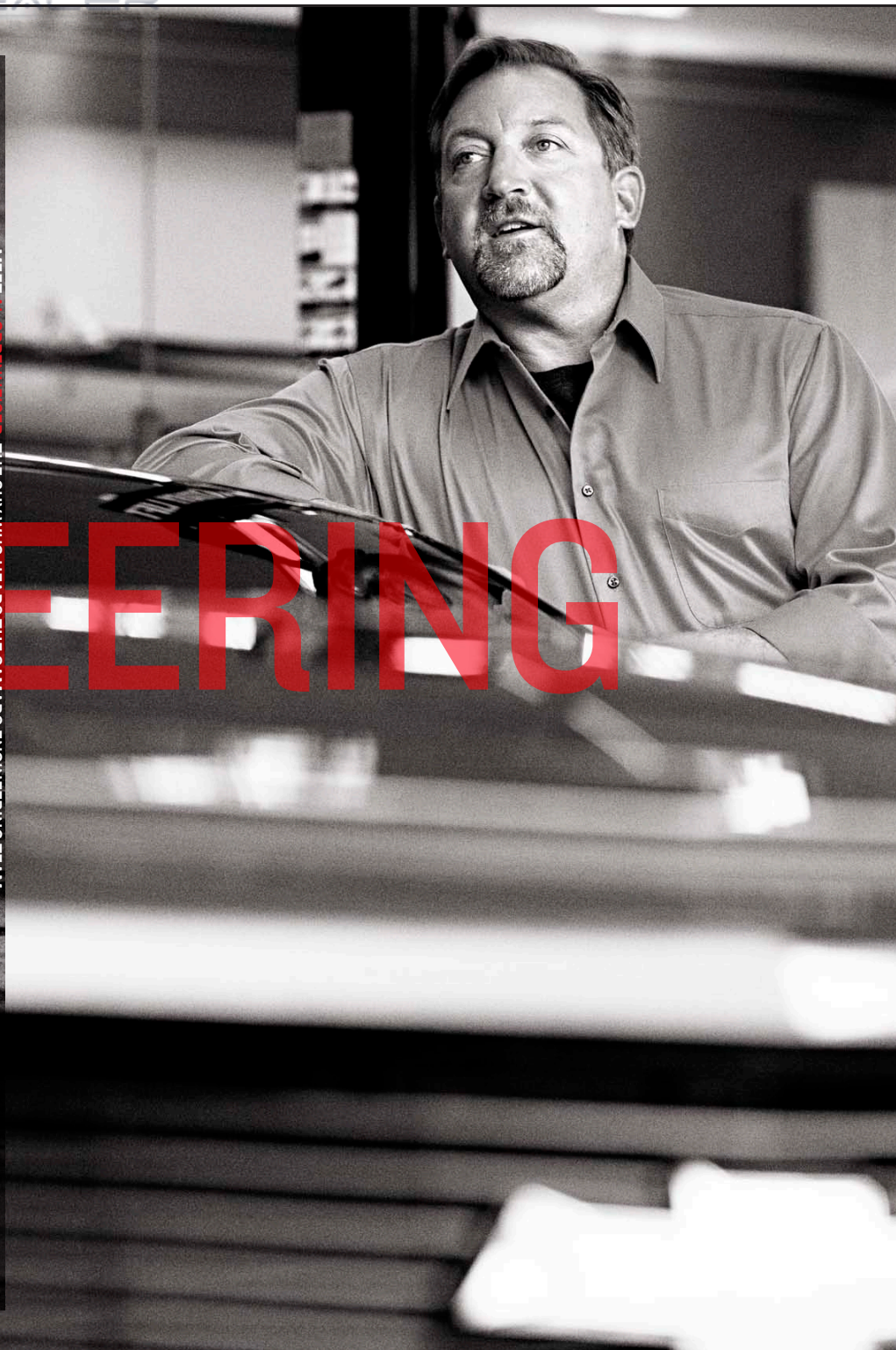
SIGN

C



“One of the reasons we were successful going from sketch to concept car to production is the engineers—they get the V8 rear-wheel-drive power thing—I mean, those guys are gearheads, they’ve got gas in their veins. Anything that was a ‘theme buster,’ that threatened to diminish the design, was rejected. That’s why the car’s soul survived intact. What we’ve done since the launch is try to balance the power with poise. The new FE4 suspension is a performance improvement for the 2012 Camaro SS Coupe. We redesigned the front and rear stabilizer bars, so it’s approximately 33% stiffer than the FE3 it replaces. It’s a more precise performance suspension, with greater roadholding capability. We learned a lot from track-testing, and refined the suspension geometry for flatter cornering, a more neutral balance during hard turns and minimized understeer at the limit.”

MEET AL OPPENHEISER, THE GUY WHO HEADS THE CAMARO ENGINEERING TEAM:



R&E ENGINEERING

2012 COUPE AND CONVERTIBLE V8

CAMARO

TEMPTATION



Chevy Runs Deep

SS COUPE

IMPURE THOUGHTS

GARDELLA RACING'S
FORMULA DRIFT DRIVER
RYAN TUERCK with a
Rally Yellow 2012 Camaro SS.

Unmistakable. Underfoot, an absolute torquefest on 20-inch rear wheels¹ and Pirelli[®] PZero[®] tires. An enhanced FE4 suspension holds tight with retuned dampers and stabilizer bars, making its debut on this year's SS Coupe. To think its underlying power is conveyed in a brooding look of deep-set eyes, an aggressive front fascia and a dark "power" slot that defines the hood's signature dome. Intimidation may be its greatest strength of all. Strangely, staring it down, you feel a deep simpatico reserved for blood brothers. You look. You admire. You respect. And as the engine growls to life, you just know. It can.

¹ Use only GM-approved tire and wheel combinations. See Specifications page disclosures 1 and 2 for important details.



Camaro SS shown in Rally Yellow (extra-cost color) with available RS Package.

SATISFY YOUR

SS in a nutshell: A 6.2L V8 with standard 426 horsepower and 420 lb.-ft. of torque (or 400 horsepower with available 6-speed automatic transmission with TAPshift® control). Launch control (with manual transmission) that helps minimize wheel spin for fast 0-to-60 sprints.

And 20-inch wheels with Pirelli® PZero® ultra high performance tires.¹ Yet even with all that horsepower, Camaro SS still offers surprising fuel economy: 24 MPG highway.² In the available automatic transmission version of SS, Active Fuel Management™ technology delivers power when you want it and conserves it when you don't.

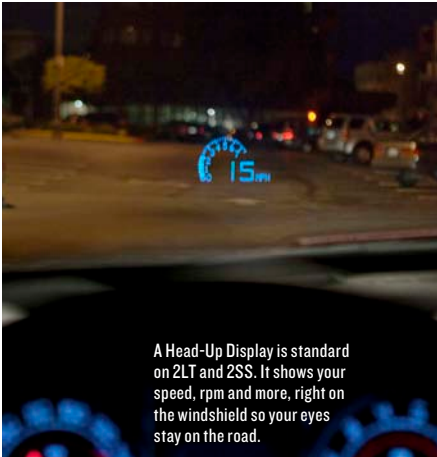
Soft ambient lighting—shown with available Inferno Orange-accented, leather-appointed interior—sets the mood for the Camaro SS when the sun goes down.

PRIMAL URGES

¹ Use only GM-approved tire and wheel combinations. See Specifications page disclosures 1 and 2 for important details.
² EPA-estimated.



Massive four-piston Brembo[®] vented disc brakes are standard on SS.



A Head-Up Display is standard on 2LT and 2SS. It shows your speed, rpm and more, right on the windshield so your eyes stay on the road.



A performance version of the 4.5-link independent rear suspension with progressive-rate coil springs adds handling precision yet maintains a smooth ride over less-than-perfect roads. Mustang doesn't get it but every Camaro does.



Camaro 2SS shown in Inferno Orange Metallic (extra-cost color) with available Gray Rally Stripes.

Any convertible is an engineering and design challenge. Camaro SS Convertible? That required exceptional care to ensure high performance wasn't sacrificed in the pursuit of beauty. Planned from the outset to be offered as a convertible, Camaro SS is absent the body flex typically expected when you lose the fixed roof.

PERFORMANCE UNLEASHED

What is all present and accounted for is the torque and 400-plus horsepower of a Chevy small block V8, and the suspension to wield it over a winding road. The result? Open-air driving nirvana.

SS CONVERTIBLE



Performance is in the details. An aluminum block, 6.2L 426-horsepower V8 lays down a massive 420 lb.-ft. of torque.



Personalize your sound track. SiriusXM Satellite Radio is standard with a three- or twelve-month trial¹ depending on model. An auxiliary audio input jack for your MP3 player is also standard.

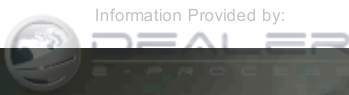


A four-pack of auxiliary gauges—standard on 2LT and 2SS—includes oil pressure, oil temperature, transmission temperature and voltmeter.

¹ Requires a subscription sold separately by SiriusXM after trial period. Available only in the 48 contiguous United States and Washington, D.C. Visit siriusxm.com for details.




Camaro 2SS Convertible shown in Rally Yellow (extra-cost color) with available RS Package and Black Rally Stripes.



ZLI COUPE

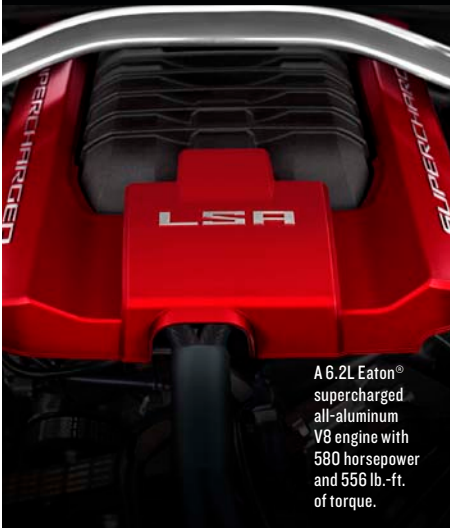


ZLI features its own unique front fascia and domed hood with carbon-fiber insert.



Brembo® six-piston front, four-piston rear disc brakes and lightweight 20-inch wheels¹ are wrapped in second-gen Goodyear® Eagle® F1 SuperCar® tires.

¹ Use only GM-approved tire and wheel combinations. See Specifications page disclosures 1 and 2 for important details.



A 6.2L Eaton® supercharged all-aluminum V8 engine with 580 horsepower and 556 lb.-ft. of torque.



Camaro ZLI shown in Victory Red (preproduction vehicle shown)

ZLI COUPE



Camaro ZLI shown in Victory Red (preproduction vehicle shown).

INNER AWW

ZLI.¹ To the hardest of the hard-core enthusiasts, it signifies a secret password used when cracking the legendary COPO codes, unlocking access to the highest levels of street-legal performance. Five generations later, a top-secret enclave of Chevy engineers has developed a new Camaro worthy of its ZLI designation—a 580-horsepower performance machine whose technology helps create a driving experience that will leave you in awe. To fully appreciate ZLI, you'll need a road course, the twistier the better. A track where its use of lightweight materials—aluminum hood with carbon-fiber air extractors—and downforce-inducing aerodynamics help Camaro ZLI wring the full effects from its 6.2L supercharged V8. And ZLI two-piece brake rotors are the largest yet fitted to a Gen5 Camaro. Six-piston Brembo calipers in front and four-piston calipers at the rear secure the discs for firm, repeatable deceleration, not drama. ZLI's second-generation Goodyear Eagle F1 SuperCar tires (285/35R20 front, 305/35R20 rear) plant all four corners with exceptional grip. The forged aluminum wheels² (20"x10" front, 20"x11" rear) reduce unsprung weight. The ZLI shape is pure Camaro—and a breed apart. Unique body elements contribute usable downforce, allowing ZLI to respond to course corrections quickly. Add details that even the diehards aren't expecting, and you've got a masterpiece with the performance to match. A track-tuned suspension with Magnetic Ride Control.[™] Sensors calculate pitch, roll, squat, dive and yaw, instantly adjusting the suspension's magnetic fluid to form the ideal damping pressure. Depending on throttle position, an active exhaust automatically switches the system between wide-open racing performance mode or a more mellow street driving mode. All without having to turn a single wrench.

¹ Available Spring 2012. ² Use only GM-approved tire and wheel combinations. See Specifications page disclosures 1 and 2 for important details.

IMPERIAL BLUE METALLIC¹

BLACK

ASHEN GRAY METALLIC¹

CRYSTAL RED TINTCOAT^{1, 2, 3}



20-INCH MIDNIGHT SILVER-PAINTED ALUMINUM WHEEL⁴



21-INCH SILVER-PAINTED ACCESSORY ALUMINUM WHEEL⁴ WITH RED FLANGE



20-INCH POLISHED-ALUMINUM WHEEL⁴

¹ Interim availability. ² Extra-cost color. ³ Not available on LS. ⁴ Use only GM-approved tire and wheel combinations. See Specifications page disclosures 1 and 2 for important details.



VICTORY RED

RALLY YELLOW¹

SUMMIT WHITE

INFERNO ORANGE METALLIC²

SILVER ICE METALLIC



01

02

03

04

01 GRAY LEATHER-APPOINTED SEATS (2LT and 2SS)

02 INFERNO ORANGE-ACCENTED, LEATHER-APPOINTED SEATS (2LT and 2SS)²

03 BEIGE LEATHER-APPOINTED SEATS (2LT and 2SS)

04 BLACK LEATHER-APPOINTED SEATS (2LT and 2SS)

Not shown: Sport Cloth in Black, Gray, Beige (1LT and 1SS); Cloth in Black, Gray (LS).



BLACK CONVERTIBLE TOP



BEIGE CONVERTIBLE TOP

¹ Extra-cost color.
² Requires available Interior Accent Trim Package.

SPECIFICATIONS

■ STANDARD □ AVAILABLE – NOT AVAILABLE

EXTERIOR

	1LS COUPE	2LS COUPE	ILT	2LT	ISS	2SS
45th Anniversary Special Edition Package: Carbon Flash Metallic exterior, Stripe Package, 20" Deep Silver-painted aluminum wheels; ^{1,2} black front seats with leather appointments, and 45th Anniversary embroidered logo and unique stitching; RS Package, unique DRL and taillamp bezels, and 45th Anniversary badging	–	–	–	□	–	□
Defogger: Rear-window electric	■	■	■	■	■	■
Fascias: Front and rear, body-color, SS-specific, with unique front grille and rear diffuser, lower extension and front air scoop	–	–	–	–	■	■
Foglamps: ³ Front, integral in front fascia	–	–	■	■	■	■
Mirrors: Outside, heated, body-color, power-adjustable; driver-side auto-dimming; inside rearview auto-dimming	–	–	–	■	–	■
Power-folding convertible top features acoustical foam in headliner for reduced wind and road noise ⁴	–	–	■	■	■	■
RS Package: 20" Midnight Silver-painted aluminum wheels, ^{1,2} high-intensity discharge headlamps with integral LED halo rings, body-color shark fin antenna and body-color roof ditch moldings	–	–	□	□	□	□
Stripe Packages: Hockey (Black, White or Gray)	□	□	□	□	□	□
Hood and Hockey (Black, White or Gray; not available on Convertible models)	□	□	□	□	□	□
Rally (Gray, White, Orange, Silver or Black)	□	□	□	□	□	□

Tonneau cover⁴

ENGINE/CHASSIS

Engine: 3.6L V6, 323 hp, 278 lb.-ft. of torque with Direct Injection and Variable Valve Timing	■	■	■	■	–	–
6.2L V8, 426 hp, 420 lb.-ft. of torque (manual); 400 hp, 410 lb.-ft. of torque (automatic)	–	–	–	–	–	–
Exhaust system: Dual-outlet stainless steel with polished tips	■	■	■	■	■	■
Suspension: Four-wheel independent, sport	■	■	■	■	–	–
Four-wheel independent, performance (uniquely tuned to Coupe or Convertible)	–	–	–	–	■	■
Transmission: 6-speed manual	■	–	■	■	■	■
6-speed automatic with overdrive; includes steering wheel-mounted TAPshift [®] controls	–	■	□	□	□	□

SAFETY & SECURITY

Air bags: ⁵ Dual-stage frontal and side-impact for driver and front passenger (Coupe/Convertible); head-curtain side-impact for front and rear occupants (Coupe); head and thorax side-impact for driver and front passenger (Convertible) includes Passenger Sensing System	■	■	■	■	■	■
Brakes: Four-wheel antilock; four-wheel, single-piston disc	■	■	■	■	–	–
Brembo [®] four-piston calipers and vented discs on all four corners	–	–	–	–	■	■
Daytime Running Lamps (DRL)	■	■	■	■	■	■
Head-Up Display (HUD)	–	–	–	■	–	■
Rear Vision Package: Rear vision camera, inside rearview auto-dimming mirror with rearview camera display and rear park assist	–	–	□ ⁶	■	□ ⁶	■
Remote vehicle starter system ⁷	–	–	□ ⁸	■	□ ⁸	■
StabiliTrak [®] Electronic Stability Control System with Traction Control	■	■	■	■	■	■
Theft-deterrent system: PASS-Key [®] III	■	■	■	■	■	■
Tire Pressure Monitoring System (excludes spare tire when equipped)	■	■	■	■	■	■

INTERIOR

Air conditioning: Single-zone manual	■	■	■	■	■	■
Bluetooth [®] wireless technology ⁹ for select phones	■	■	■	■	■	■
Center console: floor, includes armrest and auxiliary audio input jack	■	■	■	■	■	■

INTERIOR (CONTINUED)

	1LS COUPE	2LS COUPE	ILT	2LT	ISS	2SS
Convenience and Connectivity Package: Preferred Device Interface Module (PDIM), USB port, ¹⁰ leather-wrapped steering wheel and shift knob (ILT), and remote vehicle starter system when available automatic transmission is ordered	–	–	□	■	□	■
Door locks: Power-programmable with lockout protection	■	■	■	■	■	■
Windows: Power with driver and passenger Express-Up/Down; plus rear-window Express-Up/Down ⁴	■	■	■	■	■	■
Driver Information Center (DIC): Driver customization, warning messages, Oil-Life Monitor, compass, trip odometer and programmable menu functions	■	■	■	■	■	■
Gauge cluster, auxiliary: includes oil pressure, battery voltage, oil temperature and transmission fluid temperature gauges; located in lower center console	–	–	–	■	–	■
Interior Accent Trim Package: Black interior with Inferno Orange-accented seats, door trim and instrument panel appliqué and Inferno Orange-accented stitching on steering wheel, shift knob, door armrests, center console and seats	–	–	–	□	–	□
Leather-wrapped steering wheel and shift knob	–	–	□ ⁸	■	■	■
Lighting: Front reading lamps, interior dome with illuminated entry	■	■	■	■	■	■
OnStar [®] with Directions & Connections [®] for six months	■	■	■	■	■	■
Preferred Device Interface Module (PDIM): Wireless; allows user to control a remote audio device (e.g., an MP3 player) through steering wheel-mounted audio controls	–	–	□ ⁸	■	□ ⁸	■
Power outlets: Two auxiliary, I2-volt	■	■	■	■	■	■
Remote Keyless Entry	■	■	■	■	■	■
Steering: Power, variable-ratio	■	■	■	■	■	■
Steering wheel-mounted audio and cruise controls	■	■	■	■	■	■
Sunroof: Power with Express-Open and venting (Coupe)	–	–	□	□	□	□
Universal Home Remote: Three-channel programmable, includes garage door opener	–	–	–	■	–	■

SEATING

Seats: Front Sport buckets; includes power recline, adjustable head restraints and folding rear seat with trunk pass-through (Coupe); fixed rear seatback (Convertible)	■	■	■	■	■	■
Seats: Heated, leather-appointed driver and front passenger	–	–	–	■	–	■

AUDIO SYSTEMS

AM/FM stereo with CD player and MP3 playback, music navigator and Graphic Information Display; includes outside temperature display	■	■	■	■	■	■
Boston Acoustics [®] premium 245-watt system with nine speakers (Coupe), eight speakers (Convertible)	–	–	□	■	□	■
SiriusXM Satellite Radio [®] with three-month trial	■	■	■	–	■	–
SiriusXM Satellite Radio [®] with twelve-month trial	–	–	–	■	–	■
USB port ¹⁰	–	–	□ ⁸	■	□ ⁸	■

WHEELS

18" Heritage steel wheel	■	■	–	–	–	–
18" Silver-painted aluminum wheel	–	–	■	–	–	–
19" Bright Silver-painted aluminum wheel	–	–	–	■	–	–
19" Polished-aluminum wheel (not shown)	–	–	□	□	–	–
20" Polished-aluminum wheel ^{1,2,13}	–	–	□	□	□	□
20" Midnight Silver-painted aluminum wheel ^{1,2,14}	–	–	□	□	□	□
20" Bright Silver-painted aluminum wheel ^{1,2} (not shown)	–	–	–	–	■	■
Tire sealant and tire inflation kit	■	■	■	■	■	■
Spare tire and wheel ¹⁵	□	□	□	□	–	–

1 Use only GM-approved tire and wheel combinations. Unapproved combinations may change the vehicle's performance characteristics. For important tire and wheel information, go to gmaccessorieszone.com or see your dealer for details. **2** Summer-only tires tend to wear faster and are more susceptible to damage from road hazards or curb impact than standard profile tires. This type of damage is not covered by the GM New Vehicle Limited Warranty. You may want to get different tires if you expect to drive in winter conditions. See your dealer for proper tire selection. **3** Not available with RS Package. **4** Convertible only. **5** Always use safety belts and child restraints. Children are safer when properly secured in a rear seat in the appropriate child restraint. See the Owner's Manual for more safety information. **6** Standard on Convertible. **7** Requires available automatic transmission. **8** Requires available Convenience and Connectivity Package. **9** Go to gm.com/bluetooth to find out which phones are compatible with the vehicle. **10** Not compatible with all devices. **11** Visit onstar.com for coverage map, details and system limitations. Services vary by model and conditions. **12** Requires a subscription sold separately by SiriusXM after trial period. Available only in the 48 contiguous United States and Washington, D.C. Visit siriusxm.com for details. **13** Requires available RS Package on LT. **14** Requires available RS Package. **15** Replaces tire sealant and tire inflation kit. **16** 45th Anniversary Special Edition only.

WHEELS



18" Heritage Steel Wheel



18" Silver-Painted Aluminum Wheel



19" Bright Silver-Painted Aluminum Wheel



20" Polished-Aluminum Wheel^{1,2,13}



20" Midnight Silver-Painted Aluminum Wheel^{1,2,14}



20" 45th Anniversary Deep Silver-Painted Aluminum Wheel^{2,16}

DEALER-INSTALLED ACCESSORIES

PERSONALIZE YOUR CAMARO AT CHEVY.COM/ACCESSORIES



21" Silver-Painted Wheel with Red Flange^{1,2}



Blade Spoiler



Body-Color Engine Cover



Body-Color Grille



Body-Color Ground Effects Package



Windscreen/Air Diffuser

100,000-MILE/5-YEAR TRANSFERABLE POWERTRAIN LIMITED WARRANTY. Every 2012 Chevy passenger car, light-duty truck, SUV and crossover comes with a 100,000-mile/5-year (whichever comes first) transferable Powertrain Limited Warranty. Plus, you get 100,000 miles/5 years (whichever comes first) of the 24/7 Roadside Assistance Program, the Courtesy Transportation Program, and much more. See dealer for details.

NEW VEHICLE LIMITED WARRANTY. GM vehicles registered in the USA are covered for 36,000 miles/3 years (whichever comes first). The complete vehicle is covered, including tires, towing to your nearest Chevrolet dealership and cosmetic corrosion resulting from defects. Repairs will be made to correct any vehicle defect, and most warranty repairs will be made at no charge. In addition, rust-through corrosion will be covered for 100,000 miles/6 years (whichever comes first). See dealer for details.

ENGINES. Chevrolet products are equipped with engines produced by GM Powertrain or other suppliers to GM worldwide. The engines in Chevrolet products may also be used in other GM makes and models.

ASSEMBLY. Chevrolet vehicles and their components are assembled or produced by different operating units of General Motors, its subsidiaries or suppliers to GM worldwide. We sometimes find it necessary to produce Chevrolet vehicles with different or differently sourced components than originally scheduled. Since some options may be unavailable when your vehicle is assembled, we suggest you verify that your vehicle includes the equipment you ordered and that, if there were changes, they are acceptable to you.

ONSTAR. OnStar services require vehicle electrical system (including battery), wireless service and GPS satellite signals to be available and operating for features to function properly. OnStar acts as a link to existing emergency service providers. Subscription Service Agreement required. Call 1-888-4ONSTAR (1-888-466-7827) or visit onstar.com for OnStar Terms and Conditions, Privacy Policy, details and system limitations.

A NOTE ON CHILD SAFETY. Always use safety belts and the correct restraint for your child's age and size. Even in vehicles equipped with the Passenger Sensing System, children are safer when properly secured in a rear seat in the appropriate infant, child or booster seat. Never place a rear-facing infant restraint in the front seat of any vehicle equipped with a passenger air bag. See the Owner's Manual and child safety seat instructions for more safety information.

IMPORTANT WORDS ABOUT THIS CATALOG. We have tried to make this catalog comprehensive and factual. We reserve the right, however, to make changes at any time, without notice, in prices, colors, materials, equipment, specifications, models and availability. Specifications, dimensions, measurements, ratings and other numbers in this catalog and other printed materials provided at the dealership or affixed to vehicles are approximations based upon design and engineering drawings, prototypes and laboratory tests. Your vehicle may differ due to variations in manufacture and equipment. Since some information may have been updated since the time of printing, please check with your Chevrolet dealer for complete details. Chevrolet reserves the right to lengthen or shorten the model year

IMPORTANT INFORMATION

for any product for any reason or to start and end model years at different times. Certain vehicle features may lose their usefulness over time due to obsolescence from technological changes. Unless otherwise noted, all claims based on GM Sport Car segment and latest available competitive information. Excludes other GM vehicles.

SPARE TIRE INFORMATION. There is no standard jack or spare tire in the 2012 Chevrolet Camaro. Your vehicle has a tire sealant and compressor kit that uses a liquid tire sealant to temporarily seal up to a one-quarter-inch puncture in the tread area of the tire. After using the tire inflator kit, it is recommended that you take the tire to an authorized retailer for inspection and repair as soon as possible, but at least within 100 miles of driving. The tire sealant cannot seal and inflate sidewall damage, punctures larger than one-quarter inch, or a tire that has unseated from the wheel. The sealant can only be used on one tire and for one time before its expiration date.

CHEVY.COM. Offers shopping tools such as Chevy vehicle information, Build and Price, Find a Vehicle, Request Info, Email Sign-Up, Compare Vehicles, Financial Tools...and much more.

24-HOUR ROADSIDE ASSISTANCE PROGRAM (1-800-CHEV-USA). Chevrolet Roadside Assistance provides you with the following services for 100,000 miles/5 years (whichever comes first): Emergency Towing (to closest Chevy dealer from a legal roadway), Lockout Service (for keys locked inside vehicle), Fuel Delivery (\$5 worth of fuel delivered on the road) and Jump Starts (at home or on the road). For specific terms and conditions, please contact your Chevrolet Roadside Assistance advisor at 1-800-243-8872. Some services may incur costs.

OWNER SERVICES. Chevrolet is committed to enhancing the ownership experience through a wide array of programs. For more information about 24-hour Roadside Assistance, Courtesy Transportation, Customer Assistance Center, Chevy Safety, marketing and incentives, visit chevy.com.

CHEVY.COM/SAFETY. Chevrolet is committed to keeping you and your family safe—from the start of your journey to your destination. That's why every Chevrolet is designed with a comprehensive list of safety and security features to help give you peace of mind.

GM, the GM Logo, Chevrolet, the Chevrolet Logo and the slogans, emblems, vehicle model names, vehicle body designs and other marks appearing in this catalog are the trademarks and/or service marks of General Motors, its subsidiaries, affiliates or licensors. ©2011 OnStar. All rights reserved. SiriusXM and all related marks and logos are trademarks of SiriusXM Radio Inc. and its subsidiaries. The Bluetooth word mark is a registered trademark owned by Bluetooth SIG, Inc., and any use of such mark by Chevrolet is under license. Brembo is a registered trademark of Brembo S.p.A. Pirelli and PZero are trademarks of Pirelli & C. S.p.A. Boston Acoustics is a registered trademark of Boston Acoustics Inc. ©2011 General Motors. All rights reserved.

OWNERSHIP EXTRAS



chevy.com/warranty



ACCESSORIES

chevy.com/accessories



onstar.com



siriusxm.com

